

Foods, Flavors & Fragrances

Analysis of Nicotine and Impurities in Electronic Cigarette Solutions and Vapor

By Jason S. Herrington, Colton Myers, and Amanda Rigdon

Abstract

Electronic cigarettes (e-cigarettes) are growing in popularity exponentially. Despite their ever-growing acceptance, relatively little work has been done to characterize their vapor. To date, the majority of e-cigarette research has focused on characterizing the solutions, which are ultimately vaporized for the end user to inhale. The current study focused on developing a complete analytical package for the quick and simple analysis of electronic cigarette solutions and vapor to determine nicotine content and impurity profiles. Rapid (<5 min) gas chromatography–flame ionization detector (GC-FID) methods (using both helium and hydrogen carrier gas) were developed for the determination of nicotine content in e-cigarette solutions. In addition, a straightforward GC mass spectrometry (GC-MS) method was developed for the determination of impurities in e-cigarette liquids. Lastly, a simple sampling device was developed to draw e-cigarette vapor into a thermal desorption (TD) tube, which was then thermally extracted and analyzed via the same GC-MS method. This novel approach was able to provide detectable levels of volatile organic compounds (VOCs) and semivolatile organic compounds (SVOCs), which were not detected in the liquids, from a single 40 mL puff. All three of the methods may be done with one GC, two detectors, and one analytical column (Rtx®-VMS), thereby reducing required resources and affording easy comparison of results.

Introduction

Electronic cigarettes (e-cigarettes) do not burn tobacco, rather they produce an aerosol (without flame or smoke) from a battery-powered, metal heating element and liquid-containing cartridge [1]. The liquid typically consists of humectants (propylene glycol [1,2-propanediol] and/or glycerin), flavorants, and nicotine [2]. When an e-cigarette's power source is activated, the heating element vaporizes the liquid to form a mist, which the end user then may inhale (often referred to as "vape") [3]. The smoke-like vapor imitates tobacco smoke visually and replicates the burning sensation in the throat and lungs (often referred to as "throat hit"). These similarities to tobacco smoke, combined with the same hand-to-mouth behaviors, have contributed to the rapid adaptation of electronic cigarettes [4-6]. Despite their increasing use on a global scale [3], relatively little is known about the e-cigarette chemical components. The majority of studies have focused primarily on the nicotine content and impurities (e.g., nitrosamines) of e-cigarette liquid (e-juice) [7]. More important, relatively little is known about the chemical composition of the vapor, which is ultimately what end users are exposed to [7, 8].

Only a few researchers (e.g., Goniewicz et al. [7], Kosmider [9], and Schober et al. [8]) have attempted to characterize e-cigarette vapor by analyzing it for the presence of volatile organic compounds (VOCs), nitrosamines, heavy metals, and polycyclic aromatic hydrocarbons (PAHs); however, their study designs have been relatively complex and/or required the use of a specialized smoking machine and/or an array of specialized analytical instruments. Such requirements are often not practical for routine contract laboratory testing. The current study evaluates the nicotine content and impurities of several commercially available e-cigarettes and their respective solutions via simple and rapid GC-FID and GC-MS methods. In addition, the primary e-cigarette emissions were analyzed for VOCs and semivolatile organic compounds (SVOCs) via a simple and novel technique that pairs thermal desorption (TD) with GC-MS. Results, analytical techniques, obstacles, and solutions are discussed.

Experimental

Electronic Cigarettes and Liquids

Four commercially available electronic cigarettes (Table I) were chosen from the “Best E-Cigarettes of 2014,” which is a top 10 list of e-cigarettes as viewed by “experts and users” [10]. It is important to note that these four chosen e-cigarettes also routinely appeared on other web-based review sites as “top 10” performers. In addition, these four brands were readily obtained from local stores. All four e-cigarettes were “1st generation” cigarettes (i.e., generally mimicking the size and look of regular cigarettes) [11] and, with the exception of vendor D, were disposable. In addition to the e-cigarettes, their respective e-liquids (i.e., same brand, flavor, and nicotine content) were obtained.

Vendors A, B, and C indicated their claimed nicotine percentage was based on wt/wt analysis. Vendor D indicated their labeled value was based on vol/vol analysis; however, one side of the D refill solution bottle denoted 1,000 mg of nicotine, which is in keeping with a wt/wt analysis (which appears to be the industry standard) or a wt/vol analysis. Therefore, it was not entirely clear how vendor D determined their nicotine concentrations. Upon receipt, 1 mL of each e-cigarette solution was pipetted with a calibrated syringe onto a calibrated scale to determine the density of each solution. Measured densities were later used to convert wt/wt label claims to wt/vol values for direct comparison to the analytically determined wt/vol values using the following equation:

$$\text{Nicotine Concentration (mg/mL)} = \text{Solution Density} \left(\frac{\text{mg}}{\text{mL}} \right) \times \text{Vendor Claimed Concentration} \left(\frac{\text{mg}}{\text{mg}} \right)$$

Table I: Characteristics of Electronic Cigarettes and Liquids

Vendor	Claimed Nicotine % (wt / wt)	Style	Measured Density (g/mL)
A	1.8 (18 mg/1,000 mg)	Classic Tobacco	1.1179
B	1.2 (12 mg/1,000 mg)	Classic Tobacco	1.1843
C	1.2 (12 mg/1,000 mg)	Menthol	1.2006
D	1.8 (18 mL/1,000 mL)*	Classic Tobacco	1.1271

*One label on the solution refill bottle indicated the % nicotine was based on % vol / vol; however, the other side of the bottle denoted 1,000 mg, which is in keeping with wt/wt analysis.

Nicotine

The following system was used to analyze electronic cigarette e-liquid nicotine concentrations: an Agilent 7890A GC equipped with an Agilent FID. An Rtx®-VMS column was chosen as the analytical column based on its unique ability to separate volatile compounds. The GC-FID parameters for both helium and hydrogen carrier gases are presented in Table II. The nicotine levels of the e-cigarette solutions were determined by calibrating the GC-FID with a National Institute of Standards and Technology (NIST) traceable nicotine standard (cat.# 34085). The 1,000 µg/mL nicotine standard was serially diluted with methylene chloride to generate a 7-point external calibration curve (Table III). Although not shown, a United States (U.S.) Environmental Protection Agency (EPA) Method 8260 internal standard (cat.# 30074) was found to be suitable for the current work.

All electronic cigarette solutions were diluted with methylene chloride by one hundred fold. This dilution was carried out for the following reasons: 1) Initial work with the e-cigarette solutions indicated the liquids were relatively viscous in nature. This viscosity resulted in the formation of air bubbles in the autosampler syringe. A 100:1 dilution remedied any viscosity issues. 2) The e-cigarette solutions chosen for this study appeared to have nicotine concentrations of ~15–25 mg/mL, which was outside the concentration range of the calibration curve (Table III). A 100:1 dilution resulted in nicotine levels that fell between the upper and lower limits of the calibration curve. It is important to note that methylene chloride was chosen as the diluent instead of methanol because the methanol solvent peak coeluted with the ethanol (one of the major constituents of e-cigarette solutions) peak.

Table II: Analytical system and parameters utilized for quantifying the nicotine content of electronic cigarette liquids.

Agilent 7890A GC-FID			
Column	Rtx-VMS, 30 m, 0.25 mm ID, 1.40 µm (cat.# 19915)		
Injection	Diluted (100:1) electronic cigarette liquid		
Inj. Vol.	1.0 µL split (200:1)		
Liner	Sky 4 mm Precision liner w/wool (cat.# 23305.5)		
Inj. Temp.	250 °C		
Septum Purge Flow	3 mL/min		
Detector	FID @ 250 °C		
Carrier Gas	He, constant flow	H ₂ , constant flow*	H ₂ , constant flow*
Flow Rate	2.0 mL/min	2.50 mL/min	2.50 mL/min
Linear Velocity	44.4 cm/sec	67.2 cm/sec	67.2 cm/sec
Oven	100 °C to 260 °C at 35 °C/min (hold 0.25 min)	100 °C to 260 °C at 54 °C/min (hold 0.15 min)	100 °C to 240 °C at 35 °C/min
*Requires a fast ramping oven			

Table III: External nicotine calibration curve for quantifying the nicotine content of electronic cigarette liquids.

1.00 mg/mL Nicotine Standard (cat.# 34085)				
Level	µL of Previous Level	µL of Methylene Chloride	Total Volume (µL)	Concentration (mg/mL)
1	NA	NA	NA	1.00
2	100	100	200	0.500
3	100	100	200	0.250
4	100	100	200	0.125
5	100	100	200	0.063
6	100	100	200	0.031
7	100	100	200	0.016

Impurities

The following analytical system was used for the qualitative determination of any impurities found in the electronic cigarette solutions: an Agilent 7890B GC coupled with an Agilent 5977A MS detector. The GC-MS parameters are presented in Table IV. This analysis also utilized the Rtx®-VMS column based on its proven performance for volatile compounds.

Table IV: Analytical system and parameters utilized for determination of electronic cigarette solution impurities.

Agilent 7890B/5977A GC-MS Parameters	
Column	Rtx-VMS, 30 m, 0.25 mm ID, 1.40 µm (cat.# 19915)
Injection	Diluted (2:1) electronic cigarette liquid
Inj. Vol.	1.0 µL split (10:1)
Liner	Sky 4 mm Precision liner w/wool (cat.# 23305.5)
Inj. Temp.	250 °C
Purge Flow	3 mL/min
Oven	35 °C (hold 1 min) to 250 °C at 11 °C/min (hold 4 min)
Carrier Gas	He, constant flow
Flow Rate	2.0 mL/min
Linear Velocity	51.15 cm/sec
Detector	MS
Mode	Scan
Transfer Line Temp.	250 °C
Analyzer Type	Single quadrupole
Source Temp.	230 °C
Quad Temp.	150 °C
Electron Energy	70 eV
Tune Type	BFB
Ionization Mode	EI
Acquisition Range	15 – 550 amu
Rate	5.2 scans/sec

Vapor

Electronic cigarette vapor was analyzed for nicotine and impurities by trapping the vapor on thermal desorption tubes. Goniewicz et al. and other researchers have used smoking machines (e.g., Teague TE-2, Borgwaldt RM20S) to generate and collect e-cigarette aerosols; however, access to such an apparatus was not available for this study [7]. Therefore, in order to provide reproducible and quantitative results, a simple sampling device (Figure 1) was adapted from a 50 mL gas-tight syringe (cat.# 24761). The syringe was used to draw 40 mL of vapor in ~4 seconds from the e-cigarettes across a stainless steel thermal desorption tube packed with Tenax TA, Carboxgraph TD, and Carboxen 1003 (unconditioned [cat.# 26469] or conditioned [cat.# 26470]). This tube was chosen based on the optimized combination of three sorbents to screen for VOCs in the C2-3 range up to SVOCs in the C30-32 range. Although this method was manual, a ~4-second puff was utilized, as suggested based on Farsalinos et al.'s observations on e-cigarette topography [12]. In addition to the single puff sample, a 10-puff sample was also taken in order to mimic a smoking regime. This sample was taken by manually drawing ten 4-second puffs separated by 10-second intervals between puffs. The desorption tube was then transferred to the following analytical system for determining the VOCs and SVOCs directly emitted from an e-cigarette: a Markes UNITY™ thermal desorption system paired with an Agilent 7890B GC coupled to an Agilent 5977A MS detector. The UNITY™ system and GC-MS parameters are presented in Table V and Table IV, respectively.

The vapor concentrations of selected VOCs were calculated from a 5-point calibration curve generated by analyzing a series of volumes of a 10.0 ppbv primary standard (Table VI). The 10.0 ppbv primary standard was generated by injecting 180 mL of a 1.00 ppmv 75 component TO-15 + NJ mix (cat.# 34396) and 180 mL of a 1.00 ppmv ozone precursor mixture/PAMS (cat.# 34420) into an evacuated 6-liter SilcoCan® air monitoring canister (cat.# 24142-650) and pressurizing the canister to 30 psig with 50% RH nitrogen. Ochiai et al. [13] determined 50% RH to be optimal for stability. The standard was allowed to age for 7 days.

Figure 1: Gas-tight syringe sampling apparatus for quantitatively drawing electronic cigarette vapor into a thermal desorption tube.

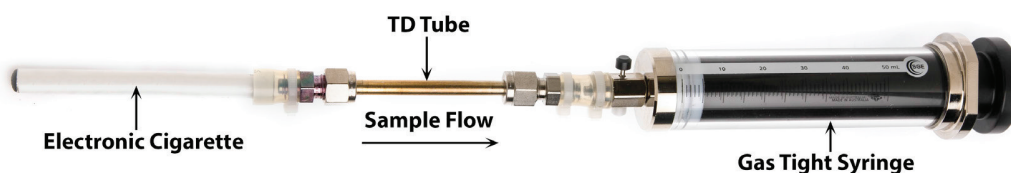


Table V: Markes UNITY™ thermal desorption system and parameters utilized for thermally extracting electronic cigarette aerosols for the qualitative and quantitative determination of VOCs and SVOCs emitted from electronic cigarettes.

Markes UNITY Parameters			
General Settings		Trap Settings	
Operating Mode	Standard two stage	Pre-Trap Fire Purge	1.0 min
Standby Split	True	Flow	20.0 mL/min
Standby Flow	5 mL/min	Trap Low	0 °C
Flow Path Temperature	210 °C	Heating Rate	Max
Minimum Carrier Pressure	5.0 psi	Trap High	320 °C
GC Cycle Time	0.0	Trap Hold	5 min
		Split On	True
Pre-Desorption		Split On	20 mL/min
Prepurge Time	1.0 min		
Trap in Line	False		
Split On	True		
Flow	20 mL/min		
Tube/Sample Desorption			
Time 1	10.0 min		
Temperature 1	320 °C		
Trap in Line	True		
Split On	False		

Table VI: Calibration curve for calculating vapor concentrations determined on a Markes UNITY™ thermal desorption system.

Standard (ppbv)	Injection Volume (mL)	Calibration Concentration (ppbv)
10.0	720	180
10.0	360	90
10.0	120	30
10.0	40	10
10.0	4	1.00

Blanks

The Markes UNITY™ system was operated with helium carrier gas for desorbing the thermal desorption tubes and the cryogenic trap during ballistic heating for analyte focusing on the head of the analytical column. The combination of helium gas (devoid of oxygen) and elevated temperatures may have established conditions that were ideal for pyrolysis of propylene glycol and/or glycerin. The pyrolysis of propylene glycol and glycerin has been demonstrated to produce formaldehyde, acetaldehyde, and acrolein. Therefore, the following experiments were conducted to evaluate any compound contributions from the TD-GC-MS process itself: empty stainless steel tubes (i.e., no sorbents) and packed thermal desorption tubes (i.e., multi-bed sorbents) were injected with 1 μ L aliquots of the electronic cigarette solutions and run through the TD-GC-MS analysis. In addition, the air drawn through the electronic cigarettes during sampling came from the laboratory. Due to the ubiquitous nature of VOCs such as formaldehyde and benzene, it was imperative to determine the background contributions of VOCs to the vapor analysis. Therefore, 40 mL samples of the laboratory air were periodically collected with thermal desorption tubes and analyzed with the same TD-GC-MS method.

Results and Discussion

Nicotine

Analyses of electronic cigarette solutions, as shown in Figure 2 (helium), Figure 3 (hydrogen, fast ramp), and Figure 4 (hydrogen, standard ramp), using the GC-FID conditions in Table II afforded the rapid (i.e., <5 minute GC run time) determination of the major chemical components. All four vendors' e-cigarette liquids appeared to contain ethanol, propylene glycol, glycerin, and nicotine. It is important to note that all four vendors listed propylene glycol, glycerin, and nicotine; however, none of the vendors listed ethanol as an ingredient. Blank analyses indicated that ethanol was not from laboratory contamination. Methylene chloride was used as the diluent to solve viscosity and concentrations issues, hence the abundant presence of methylene chloride. As shown in Figure 5, the rapid GC-FID method produced an acceptable external calibration of nicotine from 0.016 to 1.00 mg/mL ($r > 0.995$).

As shown in Table VII, the vendor claimed nicotine concentrations were lower than the actual measured nicotine concentrations by 4 to 28%. Recall the wt/wt label claims were converted to wt/vol values using the measured density of each solution in order to allow direct comparison to the actual values determined analytically using the calibration curve. The observation of increased nicotine content was consistent with what Schober et al. [8] and others have observed as well.

Figure 2: Analysis of major electronic cigarette solution components via GC-FID (helium).

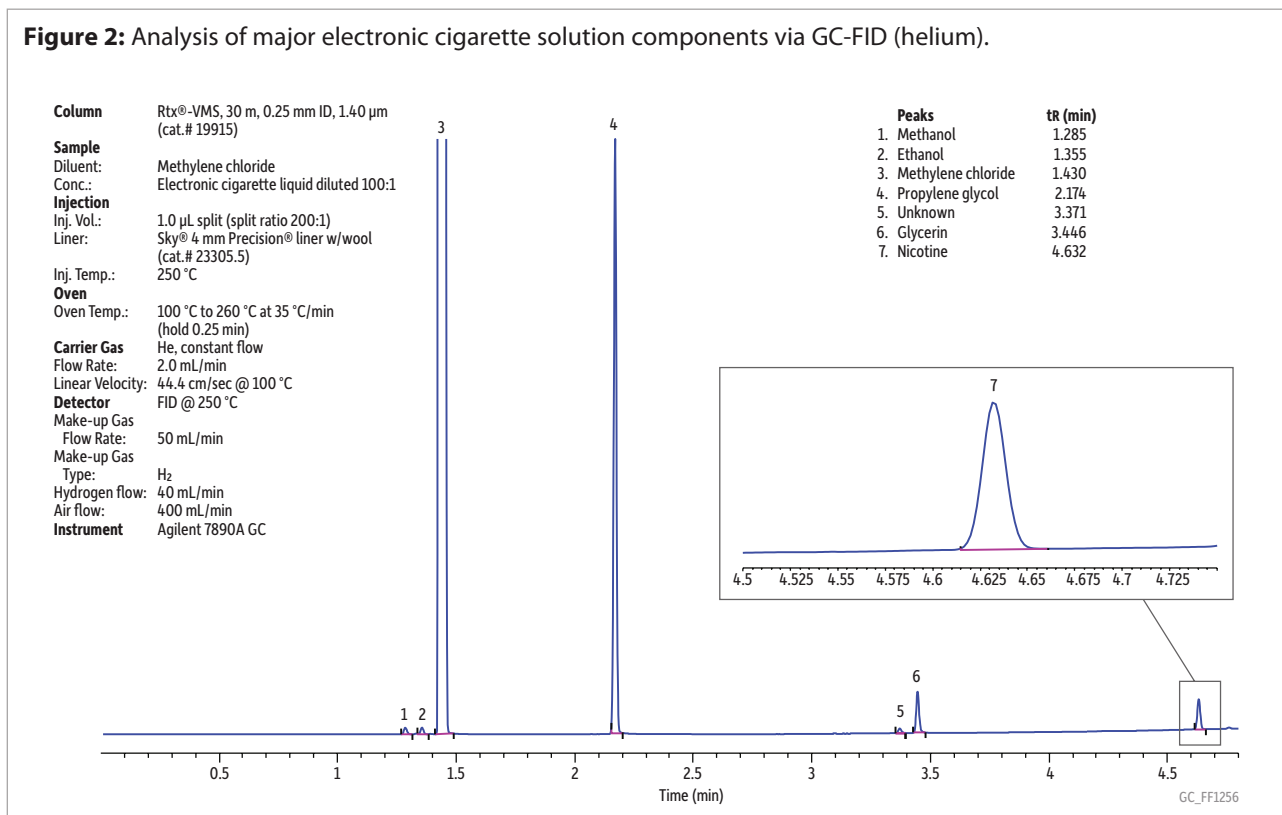


Figure 3: Analysis of major electronic cigarette solution components via GC-FID (hydrogen, fast ramp).

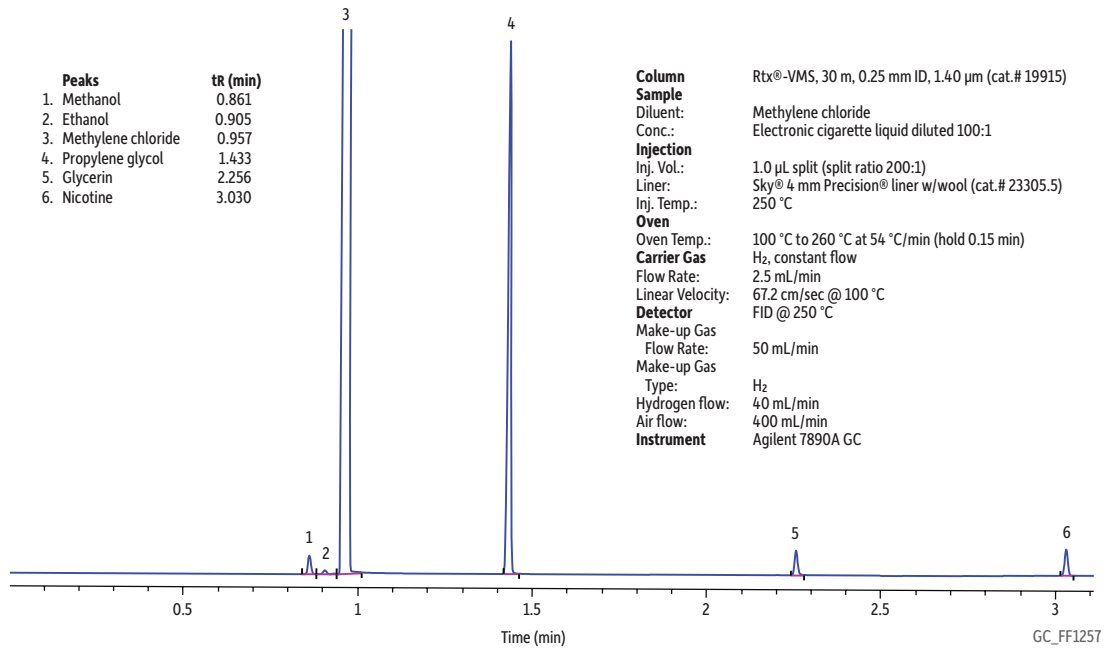


Figure 4: Analysis of major electronic cigarette solution components via GC-FID (hydrogen, standard ramp).

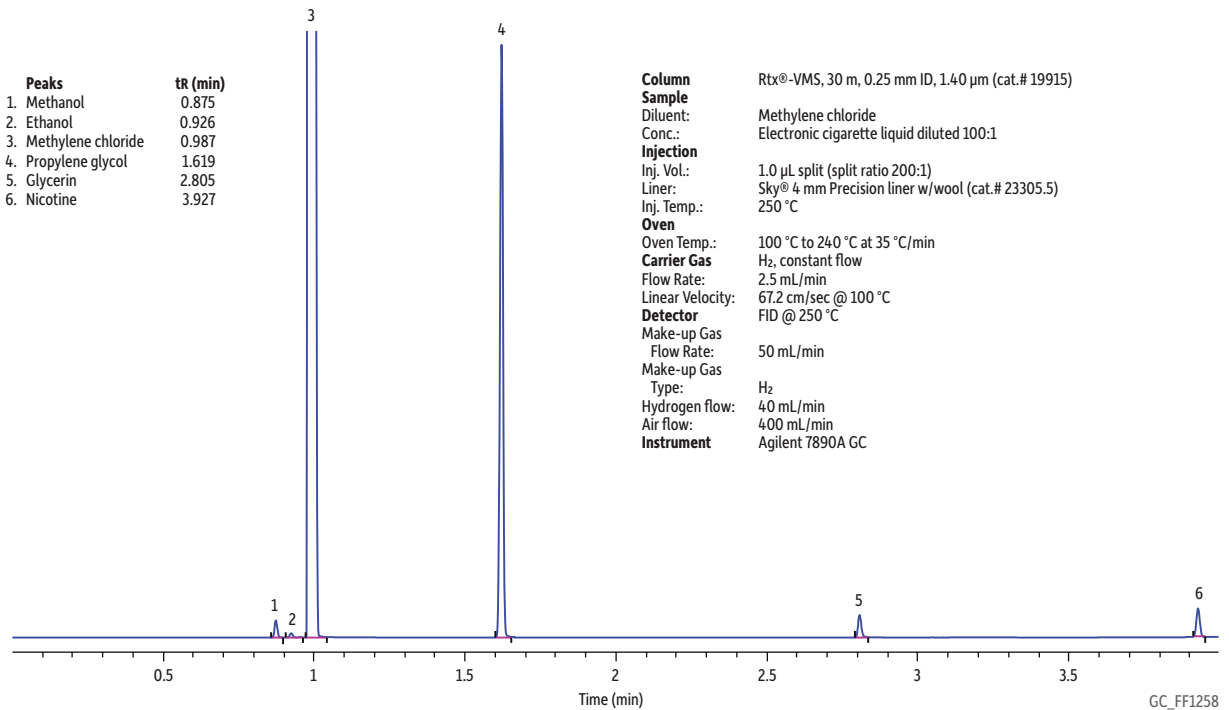


Figure 5: A linear response was obtained for nicotine over a concentration range of 0.06–1.00 mg/mL using the GC-FID method as demonstrated by the external calibration curve ($r > 0.995$).

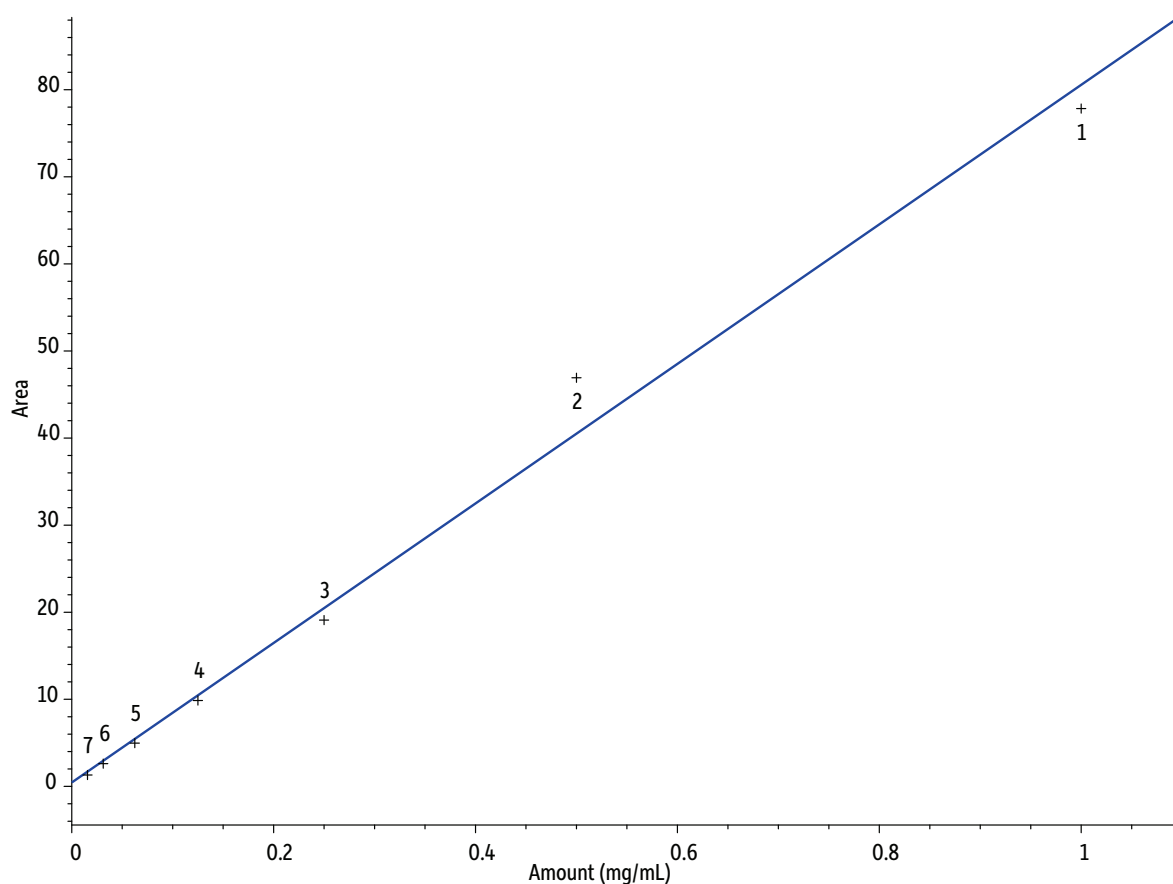


Table VII: Vendor nicotine concentrations as claimed and as determined in the current study by direct comparison with pure nicotine standards via GC-FID.

Vendor	Vendor Claimed Nicotine (mg/mL) [^]	Nicotine (mg/mL) Determined*	% Difference
A	20.1	23.4	17%
B	14.2	14.8	4%
C	14.4	17.4	21%
D	20.3	26.0	28%

[^] Calculated based on determined density.

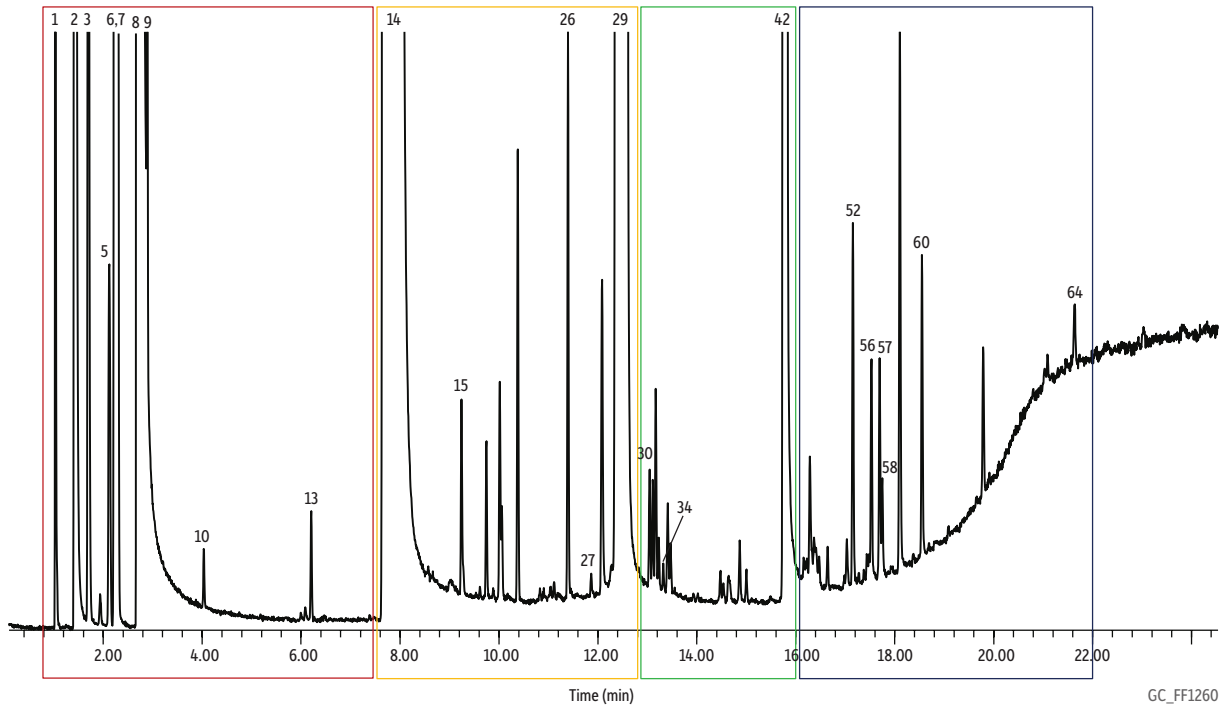
* Average of 3 analyses.

Impurities in E-Cigarette Solutions

As shown in Figure 6, the analysis of electronic cigarette solutions revealed that they contained numerous compounds besides the vendor-listed propylene glycol, glycerin, and nicotine. For the solution shown in Figure 6 (vendor A) there were 64 unidentified and identified (some only tentatively) compounds found in the e-cigarette solution. Compounds were deemed “identified” when verified with a subsequent run of an external standard with matching retention times and mass spectral data. Compounds were deemed “tentatively identified” when the mass spectral quality was 80% or greater according to the NIST 2011 database [14]. Several pyrazines were tentatively identified, which is consistent with manufacturer-added flavorings. For example, acetylpyrazine, which was tentatively identified, is a flavorant well known for producing “nutty” flavors/aromas. In addition, several pyridines were identified, which is consistent with tobacco-derived nicotine. For example, 3-(3,4-dihydro-2H-pyrrol-5-yl)- pyridine(myosmine) was also tentatively identified and this compound is an alkaloid found in tobacco [15]. It is important to note that almost half (36) of the compounds were unidentified; future work should focus on identifying these compounds.

Figure 6: Analysis of electronic cigarette solution (e-juice) by GC-MS revealed the presence of numerous components in addition to the compounds listed on the product labels.

Peaks	tr (min)	Match Quality	EC Liquid	Blank	Region	Peaks	tr (min)	Match Quality	EC Liquid	Blank	Region
1. Nitrogen/oxygen/carbon dioxide	1.051	100	x	x	Red	33. Unidentified	13.229		x		Green
2. Water	1.441	100	x	x	Red	34. 1-(3-Pyridinyl)ethanone	13.321	94	x		Green
3. Methanol	1.709	100	x	x	Red	35. Unidentified	13.412		x		Green
4. Unidentified	1.934		x	x	Red	36. Unidentified	13.463		x		Green
5. <i>cis</i> -1,2-Dimethylcyclopropane	2.117	94	x	x	Red	37. Unidentified	14.479		x		Green
6. Ethanol	2.239	100	x		Red	38. Unidentified	14.534		x		Green
7. 1,1-Dichloroethene	2.282	94	x	x	Red	39. Unidentified	14.643		x		Green
8. Methylene chloride	2.757	100	x	x	Red	40. Unidentified	14.863		x		Green
9. 1,2-Dichloroethene	2.891	94	x	x	Red	41. Unidentified	15.003		x		Green
10. Ethyl acetate	4.037	91	x		Red	42. Nicotine	15.800	100	x		Green
11. Unidentified	6.000		x		Red	43. Unidentified	16.161		x		Blue
12. Unidentified	6.085		x		Red	44. Unidentified	16.222		x		Blue
13. Toluene	6.207	100	x		Red	45. α -Damascone	16.289	95	x		Blue
14. Propylene glycol	7.853	100	x		Orange	46. Unidentified	16.374		x		Blue
15. 2,3-Dimethylpyrazine	9.243	91	x		Orange	47. Unidentified	16.417		x		Blue
16. Unidentified	9.615		x		Orange	48. Unidentified	16.478		x		Blue
17. Unidentified	9.713		x		Orange	49. Unidentified	16.643		x		Blue
18. Unidentified	9.889		x		Orange	50. Unidentified	16.984		x		Blue
19. Unidentified	10.017		x		Orange	51. Unidentified	17.033		x		Blue
20. Unidentified	10.060		x		Orange	52. Myosmine	17.155	95	x		Blue
21. Trimethylpyrazine	10.383	94	x		Orange	53. Unidentified	17.276		x		Blue
22. Unidentified	10.828		x		Orange	54. Unidentified	17.380		x		Blue
23. Unidentified	10.907		x		Orange	55. Unidentified	17.441		x		Blue
24. Unidentified	11.047		x		Orange	56. Nicotine 1-N-oxide	17.533	93	x		Blue
25. Unidentified	11.114		x		Orange	57. Anabasine	17.697	98	x		Blue
26. Acetylpyrazine	11.394	95	x		Orange	58. Nicotyrine	17.752	91	x		Blue
27. N-(1-Methylethyl)benzenamine	11.864	80	x		Orange	59. Unidentified	18.105		x		Blue
28. Dipropylene glycol	12.071	91	x		Orange	60. 2,3-Dipyridyl	18.550	97	x		Blue
29. Glycerin	12.473	100	x		Orange	61. Unidentified	19.788		x		Blue
30. Dipropylene glycol methyl ether	13.040	80	x		Green	62. Unidentified	21.025		x		Blue
31. Unidentified	13.107		x		Green	63. Unidentified	21.092		x		Blue
32. Unidentified	13.168		x		Green	64. Cotinine	21.635	91	x		Blue



GC_FF1260

Column Rtx®-VMS, 30 m, 0.25 mm ID, 1.40 μ m (cat.# 19915)

Sample Diluent: Methylene chloride
Conc.: Electronic cigarette liquid diluted 2:1

Injection Inj. Vol.: 1 μ L split (split ratio 10:1)
Liner: Sky® 4 mm Precision® liner w/wool (cat.# 23305.5)

Inj. Temp.: 250 °C

Oven Oven Temp.: 35 °C (hold 1 min) to 250 °C at 11 °C/min (hold 4 min)

Carrier Gas He, constant flow

Flow Rate: 2.0 mL/min

Linear Velocity: 51.15 cm/sec @ 35 °C

Detector MS

Mode: Scan

Scan Program:

Group	Start Time (min)	Scan Range (amu)	Scan Rate (scans/sec)
1	0	15-550	5.2

Transfer Line Temp.: 250 °C

Analyzer Type: Quadrupole

Source Type: Extractor

Extractor Lens: 6mm ID

Source Temp.: 230 °C

Quad Temp.: 150 °C

Electron Energy: 70 eV

Tune Type: BFB

Ionization Mode: EI

Instrument Agilent 7890B GC & 5977A MSD

Vapor

As shown in Figure 7, the simple sampling device (Figure 1) was able to successfully draw electronic cigarette vapor into a thermal desorption tube and provide detectable levels of VOCs and SVOCs from a single 40 mL puff. As observed in the impurities study, there clearly were numerous compounds (i.e., 82 unidentified and identified [some only tentatively]) in the e-cigarette vapor beyond propylene glycol, glycerin, and nicotine. However, the analysis of the vapor revealed the presence of 18 more compounds in addition to those found in the liquid analysis. Of particular interest was the presence of formaldehyde, acetaldehyde, acrolein, and xylenes, as well as several siloxanes. The current observation of these three carbonyls (formaldehyde, acetaldehyde, and acrolein) was consistent with Goniewicz et al.'s [7] and Kosmider et al.'s [9] observations.

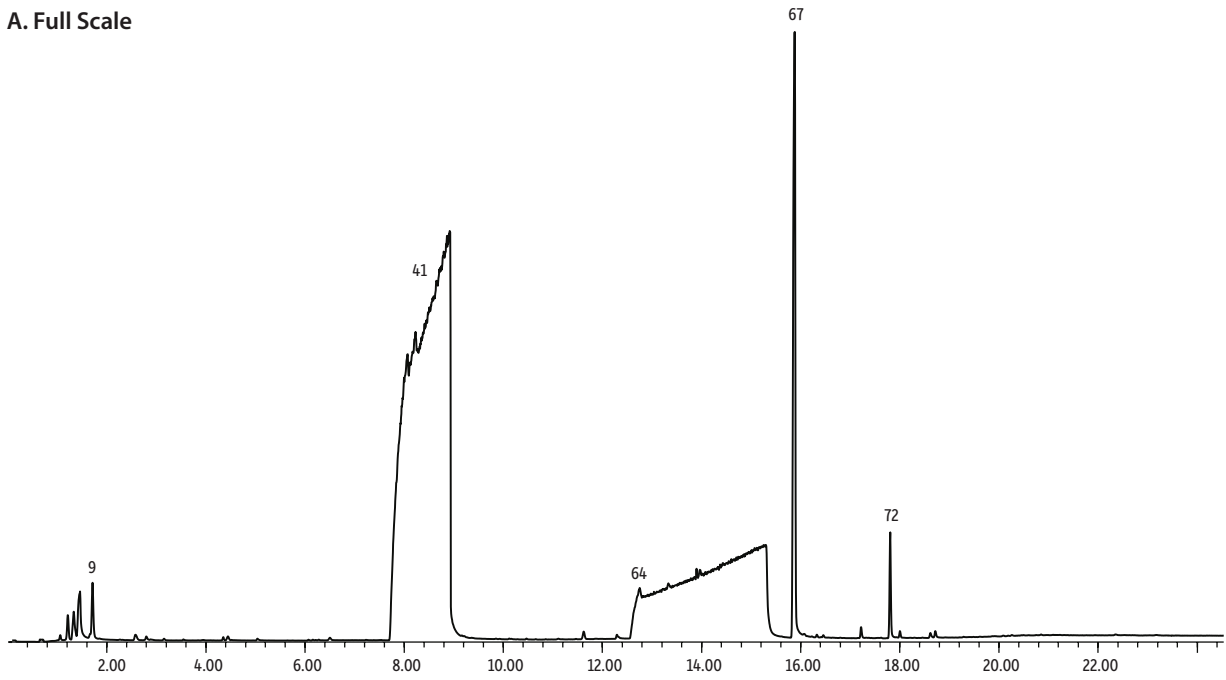
These observations are significant for the two following reasons: 1. All three of these carbonyls are acutely toxic; in addition, formaldehyde is a known human carcinogen [16] and acetaldehyde is a probable human carcinogen [17]. 2. These compounds were not present in the e-juice, which indicates they were generated during the vaporization process and/or from the e-cigarette materials. This is consistent with the fact that pyrolysis of glycerin results in the formation of formaldehyde, acetaldehyde, and acrolein [18]. This is also consistent with the fact that polysiloxanes are often used as plastic additives and the majority of the first generation e-cigarettes, like those evaluated in this study, are made with plastic bodies. All of the aforementioned have profound implications for how e-cigarettes should be evaluated, especially when considering that end users are ultimately exposed to the e-cigarette vapor rather than the liquid.

To expound upon this further, acrolein was not found in the electronic cigarette solutions. However, acrolein was found in the vapor from all four of the e-cigarettes evaluated in the current study. The acrolein concentrations ranged from 1.5 to 6.7 ppmv per 40 mL puff (0.003–0.015 $\mu\text{g}/\text{mL}$), which is comparable to the 0.004 $\mu\text{g}/\text{mL}$ Goniewicz et al. reported [7]. To put these concentrations into perspective, these levels exceeded the National Institute of Occupational Safety and Health (NIOSH) short-term exposure limit (STEL) of 350 ppbv. Furthermore, assuming 40 mL per puff and 400 to 500 puffs per e-cigarette (values suggested by several e-cigarette manufacturers), each e-cigarette would generate ~20 to 230 μg of acrolein. From a human health perspective, the acrolein emissions observed in the current study appear to be on par with what has previously been reported for conventional tobacco cigarettes (3 to 220 μg of acrolein/cigarette) [19]. Formaldehyde and acetaldehyde standards were not available at the time of publishing this application note. However, their peak areas were on the same order of magnitude as acrolein, thereby suggesting their concentrations were comparable, which is also consistent with what Goniewicz et al. reported [7].

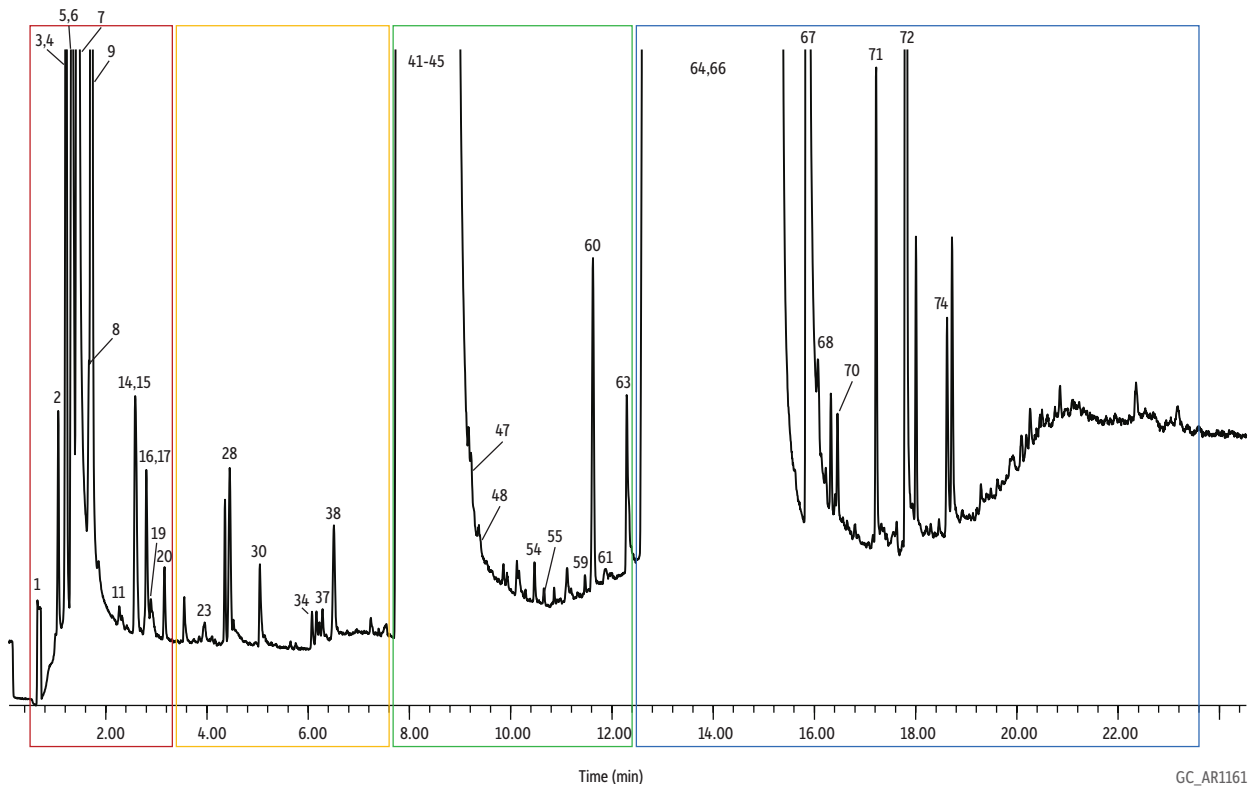
Currently, the U.S. Food and Drug Administration (FDA) does not have any regulatory authority over electronic cigarettes. However, the FDA does acknowledge that e-cigarettes, their associated risks, nicotine levels, and any potentially harmful chemicals inhaled are “not fully studied.” Therefore, the FDA has issued a proposed rule to extend their authority to include e-cigarettes [20]. Regardless of the status of the FDA's authority over e-cigarettes, it is clear from the current research and the research of others that the e-cigarette landscape is not fully understood. However, it appears that e-cigarettes are not without human health risks. Most important, and as demonstrated by the current work, when designing future e-cigarette studies investigators should strongly consider the difference between analyzing electronic cigarette solutions and analyzing electronic cigarette vapor, as it very clear that their chemical profiles are different.

Figure 7: A single 40 mL puff of electronic cigarette vapor collected on a thermal desorption tube and analyzed via GC-MS.

A. Full Scale



B. Baseline Magnification



GC_AR1161

Figure 7: Peak List

Peaks	tr (min)	Match Quality	Vapor	Blank*	Region	Peaks	tr (min)	Match Quality	Vapor	Blank*	Region
1. Nitrogen/oxygen	0.685	100	x	x	Red	43. <i>p</i> -Xylene	8.048	100	x		Green
2. Carbon dioxide	1.063	100	x	x	Red	44. <i>o</i> -Xylene	8.530	100	x		Green
3. Propene	1.200	100	x		Red	45. Styrene	8.597	100	x		Green
4. Formaldehyde	1.227	100	x		Red	46. Unidentified	9.158		x		Green
5. Sulfur dioxide	1.313	90	x		Red	47. Octamethylcyclotetrasiloxane	9.218	91	x		Green
6. Chloromethane	1.380	100	x		Red	48. 4-Methyl-1-(1-methylethyl)cyclohexene	9.371	95	x		Green
7. Water	1.453	100	x	x	Red	49. Unidentified	9.639		x		Green
8. Acetaldehyde	1.672	100	x		Red	50. Unidentified	9.852		x		Green
9. Methanol	1.715	100	x	x	Red	51. Unidentified	9.932		x		Green
10. Unidentified	1.885		x		Red	52. Unidentified	10.121		x		Green
11. Ethanol	2.270	100	x		Red	53. Unidentified	10.219		x		Green
12. Unidentified	2.331		x		Red	54. Trimethylpyrazine	10.468	80	x		Green
13. Unidentified	2.410		x		Red	55. Benzaldehyde	10.657	100	x		Green
14. Acrolein	2.581	100	x		Red	56. Unidentified	10.858		x		Green
15. Propanal	2.629	100	x		Red	57. Unidentified	11.120		x		Green
16. Methylene chloride	2.770	100	x	x	Red	58. Unidentified	11.187		x		Green
17. Acetone	2.843	100	x		Red	59. Acetylpyrazine	11.541	93	x		Green
18. Unidentified	2.892		x		Red	60. Decamethylcyclopentasiloxane	11.620	91	x		Green
19. Hexane	2.928	100	x		Red	61. Phenol	11.870	94	x		Green
20. Acetonitrile	3.160	100	x	x	Orange	62. Unidentified	12.272		x		Green
21. Unidentified	3.544		x		Orange	63. 1,1'-Oxybis-2-propanol	12.333	90	x		Green
22. Unidentified	3.842		x		Orange	64. Glycerin	12.748	100	x		Blue
23. Trimethylsilanol	3.928	100	x		Orange	65. Unidentified	13.327		x		Blue
24. Unidentified	4.092		x		Orange	66. Dodecamethylcyclohexasiloxane	13.979	94	x		Blue
25. Unidentified	4.159		x		Orange	67. Nicotine	15.862	100	x		Blue
26. Unidentified	4.245		x		Orange	68. Tetradecamethylhexasiloxane	16.082	91	x		Blue
27. Unidentified	4.354		x		Orange	69. Unidentified	16.326		x		Blue
28. Benzene	4.452	100	x	x	Orange	70. Unidentified	16.460		x		Blue
29. Unidentified	4.519		x		Orange	71. Myosmine	17.216	94	x		Blue
30. Acetic acid	5.055	86	x		Orange	72. Nicotyrine	17.807	90	x		Blue
31. Unidentified	5.141		x		Orange	73. Unidentified	18.002		x		Blue
32. Unidentified	5.647		x		Orange	74. 2,3'-Dipyridyl	18.618	94	x		Blue
33. Unidentified	5.756		x		Orange	75. Unidentified	18.721		x		Blue
34. 1-Hydroxy-2-propanone	6.073	80	x		Orange	76. Unidentified	19.294		x		Blue
35. Unidentified	6.165		x		Orange	77. Unidentified	19.611		x		Blue
36. Unidentified	6.220		x		Orange	78. Unidentified	20.093		x		Blue
37. Toluene	6.280	100	x	x	Orange	79. Unidentified	20.190		x		Blue
38. Hexamethylcyclotrisiloxane	6.506	91	x		Orange	80. Unidentified	20.269		x		Blue
39. Unidentified	7.231		x		Orange	81. Unidentified	20.501		x		Blue
40. Unidentified	7.530		x		Orange	82. Unidentified	20.855		x		Blue
41. Propylene glycol	7.737	100	x		Green						
42. <i>m</i> -Xylene	8.048	100	x		Green						

*The concentrations of these compounds in e-cigarette vapor were too close to blank and/or laboratory air concentrations to definitively state they were emitted from the e-cigarettes.

Column Rtx®-VMS, 30 m, 0.25 mm ID, 1.40 µm (cat.# 19915)
Sample
Conc.: One 40 mL puff of electronic cigarette vapor drawn via a gas-tight syringe to replicate vaping
Injection Direct
Oven
Oven Temp.: 35 °C (hold 1 min) to 250 °C at 11 °C/min (hold 4 min)
Carrier Gas He, constant flow
Flow Rate: 2.0 mL/min @ 35 °C
Detector MS
Mode: Scan
Scan Program:

Group	Start Time (min)	Scan Range (amu)	Scan Rate (scans/sec)
1	0	15-550	5.2

Transfer Line
Temp.: 250 °C
Analyzer Type: Quadrupole
Source Type: Extractor
Extractor Lens: 6mm ID
Source Temp.: 230 °C
Quad Temp.: 150 °C
Electron Energy: 70 eV
Tune Type: BFB
Ionization Mode: EI
Preconcentrator Markes UNITY™
Instrument Agilent 7890B GC & 5977A MSD
Acknowledgement Markes

Blanks

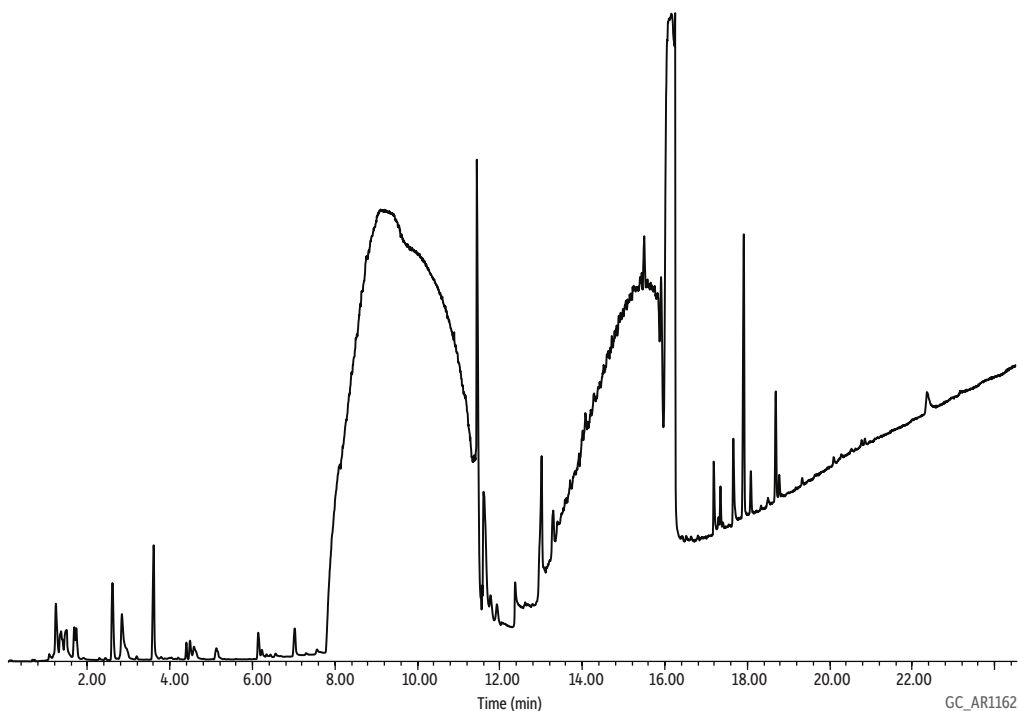
The 1 μ L aliquots of electronic cigarette solutions injected into empty stainless steel tubes (i.e., no sorbents) and analyzed via the TD-GC-MS method resulted in the formation of formaldehyde, acetaldehyde, and acrolein. However, the concentrations of these three compounds did not increase when 1 μ L aliquots of the e-cigarette solutions were injected into packed thermal desorption tubes (i.e., multi-bed sorbents) and analyzed via the TD-GC-MS method. The two aforementioned observations are consistent with the hypothesis that pyrolysis of propylene glycol and/or glycerin was taking place within the TD-GC-MS system itself and not in the thermal desorption tube media (i.e., the multi-sorbent bed). However, it was unclear as to where the pyrolysis was taking place (i.e., on the cryogenic trap during ballistic heating versus in the heated transfer lines) within the TD-GC-MS system. Regardless, the pyrolysis was responsible for 14 to 23% of the vapor concentrations of formaldehyde, acetaldehyde, and acrolein observed in the current study. The aforesaid percent contributions were approximated by comparing the carbonyl/nicotine ratios obtained from the empty stainless steel tubes and packed thermal desorption tubes to the 40 mL puff samples. In addition, the laboratory air was sometimes a source for certain VOCs; however, these levels (i.e., low ppbv) were often well below the e-cigarette levels (i.e., low to mid ppmv). Future investigators should be aware of their laboratory air concentrations and the potential pyrolysis within the TD-GC-MS system and make necessary adjustments in their reporting limits and/or background corrections. It was outside the scope of the current work; however, future work should focus on reducing pyrolysis contribution by adjusting line temperatures, heating rates, flow rates, etc.

Advantages/Limitations/Future Research

Researchers like Goniewicz et al. had access to specialized smoking machines, which enabled “realistic” smoking regimes (e.g., a 1.8 second puff with 10 second intervals between puffs). These smoking regimes may reveal more about e-cigarette vapor and/or be more accurate than the simple sampling device (Figure 1) utilized in the current study. However, the current work is significant in that multiple puffs were not needed because the present analytical techniques demonstrated detectability from a single 40 mL puff. In fact, it is important to note that a smoking regime of a 4-second puff with 10-second intervals between 10 puffs was executed manually with the simple sampling device (Figure 1). The results of this 10-puff sample are shown in Figure 8. The 10-puff sample did reveal some early eluting compounds (i.e., identified, tentatively identified, and unidentified), which were not identified in the single-puff (Figure 7). However, the propylene glycol and glycerin peaks, which were already overloaded in the single-puff sample, became so large in the 10-puff sample that most of the peaks previously identified in the single-puff sample were lost due to interference with propylene glycol and glycerin. In addition, this overloading of propylene glycol and glycerin contaminated the Markes UNITY™ thermal desorption system, thereby requiring a time-consuming cleaning to avoid carryover.

As previously mentioned in the discussion of the blanks results, future researchers should be aware of the potential pyrolysis conditions within the TD-GC-MS system and how that may affect their formaldehyde, acetaldehyde, and acrolein vapor concentrations. Alternative sampling/analytical approaches (e.g., DNPH-coated solid sorbents) are available for these carbonyls, which would circumvent the pyrolysis issues; however, they come at the significant disadvantage of time-consuming solvent extractions and the inability to scan for a large number of compounds (e.g., the 82 VOCs/SVOCs observed in the current study) in a single 40 mL puff. Future TD-GC-MS work on e-cigarette vapor should focus on optimizing the thermal desorption parameters in order to reduce pyrolysis contributions by adjusting line temperatures, heating rates, flow rates, etc. Overall, the current method may be well suited for the easy and rapid screening of e-cigarette vapor for a large number of VOCs and SVOCs.

Figure 8: Ten 40 mL puffs of electronic cigarette vapor collected on a thermal desorption tube and analyzed via GC-MS.



GC_AR1162

Column Rtx®-VMS, 30 m, 0.25 mm ID, 1.40 µm (cat.# 19915)
Sample
Conc.: Ten 40 mL puffs of electronic cigarette vapor drawn via a gas-tight syringe to replicate vaping
Injection Direct
Oven
Oven Temp.: 35 °C (hold 1 min) to 250 °C at 11 °C/min (hold 4 min)
Carrier Gas He, constant flow
Flow Rate: 2.0 mL/min @ 35 °C
Detector MS
Mode: Scan
Scan Program:

Group	Start Time (min)	Scan Range (amu)	Scan Rate (scans/sec)
1	0	15-550	5.2

Transfer Line Temp.: 250 °C
Analyzer Type: Quadrupole
Source Type: Extractor
Extractor Lens: 6mm ID
Source Temp.: 230 °C
Quad Temp.: 150 °C
Electron Energy: 70 eV
Tune Type: BFB
Ionization Mode: EI
Preconcentrator Markes UNITY™
Instrument Agilent 7890B GC & 5977A MSD
Acknowledgement Markes

Conclusions

As electronic cigarettes explode in popularity, public attention is rapidly turning toward consumer safety. While research to date has focused primarily on the components of e-cigarette solutions, data presented here indicate a need for substantially more research into the chemical profile of vapor samples. To that end, this study included development of analytical methods for both solution and vapor samples. All three methods developed in the current study used an Rtx®-VMS column—a proprietary phase to Restek—which was chosen to reduce required resources and afford easy comparison of results.

For e-cigarette solutions, rapid GC-FID methods using helium or hydrogen carrier gas were established for the determination of nicotine content. These methods would be suitable for fast quality control testing of electronic cigarette solutions. In addition, a straightforward GC-MS method was developed for the determination of impurities in e-cigarette solutions. Results showed that electronic cigarette solutions contained numerous compounds in addition to the compounds listed on the label by the vendor (propylene glycol, glycerin, and nicotine). In this study, e-cigarette solution profiles revealed 64 identified (some only tentatively) and unidentified compounds, far more than the three that were listed on the product label.

In order to analyze vapor samples, a simple yet novel sampling device was developed to draw electronic cigarette vapor into a thermal desorption tube, which was then thermally extracted and analyzed via a GC-MS method. This approach provided detectable levels of 82 VOCs and SVOCs from a single 40 mL puff and can be easily implemented by labs that do not have access to a smoking machine. Notably, some of compounds found are known to be detrimental to human health. These compounds were detected in the vapor, but not in the e-cigarette solution, which indicates they were produced during the vaporization process.

It is unequivocal that electronic cigarette solutions, and more important—vapor—have numerous compounds beyond the ingredients listed on the product label. As these compounds have potential implications for human health, the scientific community needs to place more emphasis on vapor testing in order to definitively identify the chemicals present and to determine how typical usage patterns relate to human health exposure limits.

Acknowledgements

Markes International Inc., 11126-D Kenwood Road, Cincinnati, OH 45242

References

- [1] A. Trtchounian, M. Williams, P. Talbot, Conventional and electronic cigarettes (e-cigarettes) have different smoking characteristics, *Nicotine Tob Res* 12 (2010) 905.
- [2] C.J. Brown, J.M. Cheng, Electronic cigarettes: product characterisation and design considerations, *Tob Control* 23 Suppl 2 (2014) ii4.
- [3] J.K. Pepper, T. Eissenberg, Waterpipes and Electronic Cigarettes: Increasing Prevalence and Expanding Science, *Chemical Research in Toxicology* 27 (2014) 1336.
- [4] K.E. Farsalinos, G. Romagna, D. Tsiapras, S. Kyrzopoulos, V. Voudris, Evaluating nicotine levels selection and patterns of electronic cigarette use in a group of "vapers" who had achieved complete substitution of smoking, *Subst Abuse* 7 (2013) 139.
- [5] C. Bullen, C. Howe, M. Laugesen, H. McRobbie, V. Parag, J. Williman, N. Walker, Electronic cigarettes for smoking cessation: a randomised controlled trial, *Lancet* 382 (2013) 1629.
- [6] P. Caponnetto, D. Campagna, F. Cibella, J.B. Morjaria, M. Caruso, C. Russo, R. Polosa, Efficiency and Safety of an eElectronic cigarette (ECLAT) as tobacco cigarettes substitute: a prospective 12-month randomized control design study, *PLoS One* 8 (2013) e66317.
- [7] M.L. Goniewicz, J. Knysak, M. Gawron, L. Kosmider, A. Sobczak, J. Kurek, A. Prokopowicz, M. Jablonska-Czapla, C. Rosik-Dulewska, C. Havel, P. Jacob III, N. Benowitz, Levels of selected carcinogens and toxicants in vapour from electronic cigarettes, *Tob Control* 23 (2014) 133.
- [8] W. Schober, K. Szendrei, W. Matzen, H. Osiander-Fuchs, D. Heitmann, T. Schettgen, R.A. Jorres, H. Fromme, Use of electronic cigarettes (e-cigarettes) impairs indoor air quality and increases FeNO levels of e-cigarette consumers, *Int J Hyg Environ Health* 217 (2014) 628.
- [9] L. Kosmider, A. Sobczak, M. Fik, J. Knysak, M. Zaciera, J. Kurek, M.L., Goniewicz, Carbonyl compounds in electronic cigarette vapors: effects of nicotine solvent and battery output voltage, *Nicotine Tob Res* 16 (2014) 1319.
- [10] E-Cig Reviews on the Best E-Cigarettes of 2014, *Ecigarette Reviewed* (2014). <http://ecigarettereviwed.com> (Accessed January 12, 2015).
- [11] K.E. Farsalinos, R. Polosa, Safety evaluation and risk assessment of electronic cigarettes as tobacco cigarette substitutes: a systematic review, *Ther Adv Drug Saf* 5 (2014) 67.
- [12] K.E. Farsalinos, G. Romagna, D. Tsiapras, S. Kyrzopoulos, V. Voudris, Evaluation of electronic cigarette use (vaping) topography and estimation of liquid consumption: implications for research protocol standards definition and for public health authorities' regulation, *Int J Environ Res Public Health* 10 (2013) 2500.
- [13] N. Ochiai, A. Tsuji, N. Nakamura, S. Daishima, D.B., Cardin, Stabilities of 58 volatile organic compounds in fused-silica-lined and SUMMA polished canisters under various humidified conditions, *J Environ Monit* 4 (2002) 879.
- [14] NIST Mass Spectrometry Data Center, U.S. Department of Commerce, 2014.
- [15] A. Rodgman, T.A. Perfetti, *The Chemical Components of Tobacco and Tobacco Smoke*, CRC Press, 2nd ed., 2013.
- [16] V.J. Cogliano, Y. Grosse, R.A. Baan, K. Straif, M.B. Secretan, F. El Ghissassi, Meeting report: summary of IARC monographs on formaldehyde, 2-butoxyethanol, and 1-tert-butoxy-2-propanol., *Environ Health Perspect* 113 (2005) 1205.
- [17] IARC Working Group Lyon, 13-20 October 1987, Alcohol drinking, *IARC Monogr Eval Carcinog Risks Hum* 44 (1988) 1.
- [18] Y.S. Stein, M.J. Antal, M. Jones, A study of the gas-phase pyrolysis of glycerol, *Appl Pyrolysis*, 4 (1983) 283.
- [19] *Toxicological Profile for Acrolein*, Agency for Toxic Substances and Disease Registry, U.S. Department of Health and Human Services, Atlanta, 2007.
- [20] *Electronic Cigarettes (e-Cigarettes)*, U.S. Food and Drug Administration (2014).