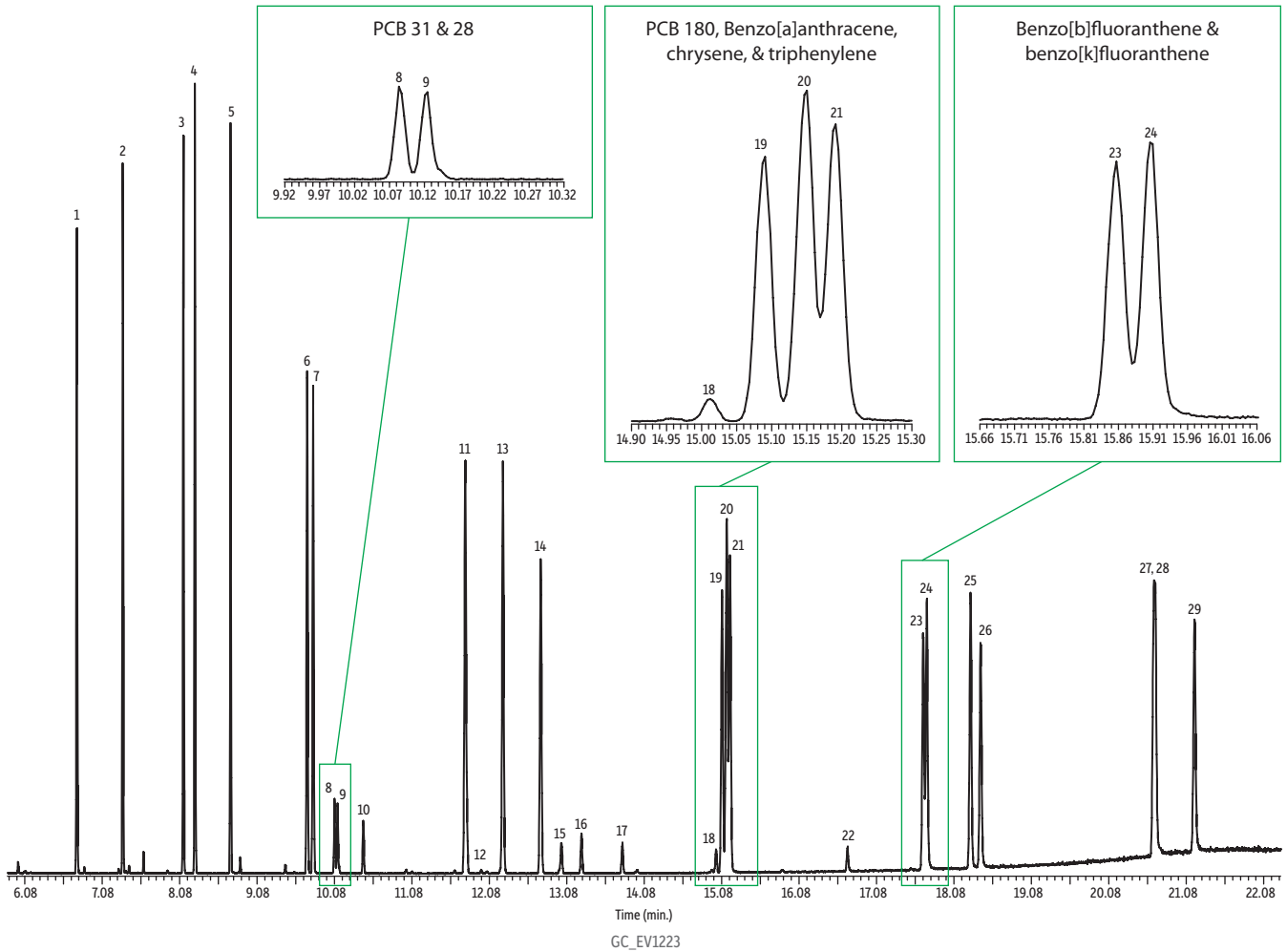


PAHs and PCB Congeners on Rxi®-XLB

| Peaks | Conc. (µg/mL) | | | | |
|------------------------|---------------|--------------------------|---|----------------------------|---|
| 1. Naphthalene | 5 | 10. PCB 52 | 1 | 20. Chrysene | 5 |
| 2. 2-Methylnaphthalene | 5 | 11. Fluoranthene | 5 | 21. Triphenylene | 5 |
| 3. Acenaphthylene | 5 | 12. PCB 101 | 1 | 22. PCB 194 | 1 |
| 4. Acenaphthene | 5 | 13. Pyrene | 5 | 23. Benzo[b]fluoranthene | 5 |
| 5. Fluorene | 5 | 14. 2-Methylfluoranthene | 5 | 24. Benzo[k]fluoranthene | 5 |
| 6. Phenanthrene | 5 | 15. PCB 118 | 1 | 25. Benzo[e]pyrene | 5 |
| 7. Anthracene | 5 | 16. PCB 153 | 1 | 26. Benzo[a]pyrene | 5 |
| 8. PCB 31 | 1 | 17. PCB 138 | 1 | 27. Dibenzo[a,h]anthracene | 5 |
| 9. PCB 28 | 1 | 18. PCB 180 | 1 | 28. Indeno[1,2,3-cd]pyrene | 5 |
| | | 19. Benzo[a]anthracene | 5 | 29. Benzo[g,h,i]perylene | 5 |



Column Rxi®-XLB, 30 m, 0.25 mm ID, 0.25 µm (cat.# 13723)
Sample SV calibration mix #5 / 610 PAH mix (cat.# 31011), Benzo(e)pyrene (cat.# custom), Triphenylene (cat.# custom), 2-Methylnaphthalene (cat.# 31285), 2-Methylfluoranthene (cat.# custom), PCB congener standard #2 (cat.# 32294), PCB 31 (cat.# custom)
Diluent: Dichloromethane
Injection
 Inj. Vol.: 0.5 µL splitless (hold 1.75 min.)
 Liner: 2.0 mm ID straight inlet liner w/wool (cat.# 21718)
 Inj. Temp.: 300 °C
 Purge Flow: 50 mL/min.
Oven
 Oven Temp: 40 °C (hold 2 min.) to 240 °C at 30 °C/min. (hold 2 min.) to 340 °C at 10 °C/min. (hold 5 min.)
Carrier Gas
 Flow Rate: He, constant flow 1 mL/min.

Detector MS
Mode: Scan
Transfer
 Line Temp.: 300 °C
Analyzer Type: Quadrupole
Source Temp.: 280 °C
Electron Energy: 70 eV
Solvent Delay
 Time: 4 min.
 Tune Type: manual
Ionization Mode: EI
Scan Range: 45-550 amu
Scan Rate: 5 scans/sec.
Instrument PE Clarus 500 GC & Clarus 500 MS